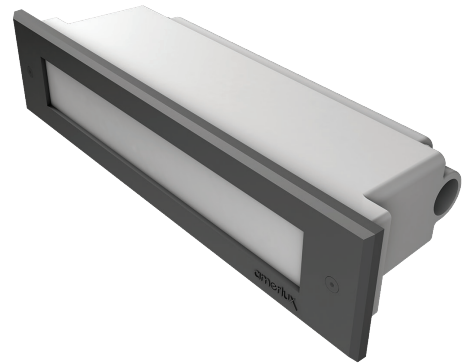




# Shredding Slopes and Lighting Steps



## Amerlux Helps Ski Resort Protect Dark Skies

Snowmass Village, a picturesque ski town nestled in the Rocky Mountains near Aspen, Colo., wanted to redevelop its town center with new buildings for a hotel, condos, town hall and an outdoor ice rink. The challenge? Built around a 35,000 square foot plaza, the town needed a way to illuminate the space while still preserving area's iconic night skies.

Construction on the hotel ran over budget and the developer called on Innovative Lighting Consultants (ILC) for help. The Denver-based lighting design firm found a ready answer for the dark skies and budget issues in Amerlux's Passo LED step light.

"There are beautiful night skies in the mountains and the town officials and developers wanted to minimize light pollution," said Mike Kershner, founder of ILC. "There is some pedestrian lighting in the area, but the lights are very spread out. To maintain the natural darkness, we used step lights along the paths between buildings and in the plaza area. We needed an inexpensive step light with a high-end finish and top performance. Amerlux's Passo step lights had way more light output than the competitors we were looking at and they were half the price."





“Passo killed the competition. Amerlux lights had way more light output for half the price of other step lights.”

Mike Kershner, founder of Innovative Lighting Consultants

So far, Kershner and his team have used 125 Passo step lights. As the village project continues, Kershner expects to use another 500 of them by the time it finishes. Using a combination of Passo’s 8-inch and 12-inch models, Kershner deployed the smaller lights throughout the plaza and placed the larger fixtures near the buildings where they needed more light.

The Passo lights preserve natural night skies with

louvers that cut down on glare and since they are not scoop step lights, there is no upward reflectance. “With Passo step lights, people can

walk around Snowmass at night without intrusive lighting,” said Kershner.

Reducing glare and light pollution was just part of the environmental equation. The other half were Passo’s energy-efficient LEDs, which will provide Snowmass Village with years of maintenance-free light and minimal energy costs.



"Amerlux is really about quality, which is why we always use them. The ratio of affordability to performance and appearance is really good."

Mike Kershner,  
founder of Innovative  
Lighting Consultants

Given that the step lights were being installed in the snow-capped Rockies, Passo's rugged construction was also important. Built to last, its sealed optical chamber keeps the snow, salt and water away from the LED optics—preventing the most common reason for failure in other step lights.

Passo lights are ideal for steps, staircases and adding ambience lighting to building façades. Designed with high-quality faceplates, Passo lights enhance safety and security, while adding a touch of beauty to the space.

During construction in Snowmass Village, the timeframe became crunched and Kershner's team needed the lights right away. "We had to get the lights very quickly, because some of the back boxes had to be installed as the concrete was poured. Fortunately, Amerlux delivered them pretty quickly," said Kershner.

"Amerlux is really about quality, which is why we always use them. The ratio of affordability to performance and appearance is really good," said Kershner.





## PROJECT SUMMARY

### End User

Snowmass Village, Colorado

### Project Scope

Illuminate the village's 35,000 sqf town square and footpaths around the plaza with lighting that doesn't pollute the area's dark mountain skies. To achieve this, the designers leveraged Amerlux's rugged Passo step light to provide light for wayfinding while maintaining starry sky views.

So far, 125 Passo step lights have been installed, with specs for upwards of 500 more as the village continues its complete redevelopment plan.

### Lighting Designer

Innovative Lighting Consultants, (Denver, Colorado)

### Benefits

- Passo step lights provided more than twice the light output for half the price that the town was originally paying when they started the project with a competitor.
- Passo's sealed optics and drivers guard against water intrusion, delivering a long-lasting lighting solution.
- Amerlux can deliver Passo step lights in 10 days, which kept the Snowmass project on schedule.
- The LEDs in Passo are highly energy efficient.
- Residents and visitors to Snowmass Village will enjoy majestic starry vistas, thanks to lighting that maintains dark skies.

Have an upcoming project? Let's bring your vision to life.  
Call **888.882.1297**



#### Headquarters

178 Bauer Drive  
Oakland, New Jersey 07436 USA  
973.882.5010 | Fax 973.882.2605

#### China Office

Oxidated Carpark 2nd Floor  
No. 124 Donghuan Road, Donghuan Jie  
Panyu, Guangzhou PRC 511400