



Making Offices Feel Like Home

Photo by Magda Biernat

LINEAR LIGHTING FROM AMERLUX CREATES BRIGHT, AIRY SPACE FOR NYC FINANCIAL FIRM

With cinematic views of Central Park and Manhattan, the iconic General Motors Building is one of the few structures in Manhattan to occupy an entire city block. A private hedge fund moved into the building and, after several years, needed to revamp its offices.

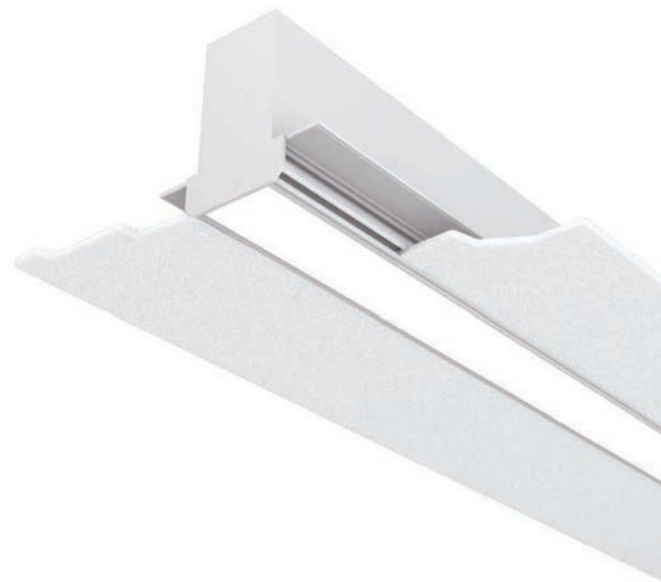
Filling an entire floor, the financial company needed a space that would foster greater collaboration among its employees and symbolize its connection to the city. Abandoning the traditional private office model, the company hired Chicago architectural firm Valero Dewalt Train Associates to deliver a unified, modern and open office space. The new floor plan is complete with a trading floor, a board room, reception areas, lounge spaces and breakrooms, a fitness center, meeting rooms and large open office areas.

“The client wanted the space to feel like a luxury condo or private club.”

— **Quentin Thomas**, president of Quentin Thomas Associates.

The 39,000 square foot office space was completely gutted down to the studs and lighting design firm Quentin Thomas Associates was brought in to help realize the goal of creating a relaxing environment.

“The client wanted the space to feel like a luxury condo or private club,” said Quentin Thomas, president of Quentin Thomas Associates. “It needed to feel like home, so employees don’t feel the urge to leave.”




Passion. Power. Performance.



It's an immersive space and you can walk into the serving area and make yourself a snack. There is a gas fireplace and fish tanks, so you're working and looking at these tropical fish."

"There are showers in the office so employees can bike to work and shower or work late and shower before going out for a late dinner. The design lets the employees use the space as a hotel and entices them to stay and put in more time," Thomas continued.

The open offices are on the perimeter of the floor and have a clean, modern aesthetic and sweeping views of the city that never sleeps. The center of the floor is filled by communal and social spaces that feature warm wood panels and accents.

To achieve the right environment for the different areas, Thomas leveraged Amerlux lighting products, lighting nearly the entire floor with LED lights. In total, more than 200 standard-sized four-foot lengths of Grűv 1.5" Recessed Linear LED light fixtures and more than 160 Hornet HP 3.5" square lensed downlight fixtures were installed. Both the Grűv and Hornet LED lights were 3500K, 16W LEDs.

"Amerlux takes tremendous care to develop their product line so the glare is minimized. Other manufacturers offer a 1.5" linear product, but they aren't as bright, or they are glary."

— **Quentin Thomas**, president of Quentin Thomas Associates.

Grűv and Hornet revealed an outstanding space with Grűv fixtures illuminating the offices, work spaces, conference and meeting rooms, reception area and the board room. Hornet fixtures were used in the hallways, elevator lobby, board room and several of the conference rooms.

Thomas chose Amerlux products for this prestigious project because of their quality.

"Amerlux takes tremendous care to develop their product line so the glare is minimized," he said. "Other manufacturers offer a 1.5" linear product, but they aren't as bright, or they are glary. When Amerlux makes price-point-sensitive products, they streamline manufacturing rather than cutting the optics like other manufacturers do. And it shows in the quality of the fixtures. The glare control, the optics, the lensing are very important. The detailing—how the lens snaps in, how the light is accessed to clean it are critical.



Photo by Magda Biernat

“Lights need to look great when they are turned on and when they are turned off. Amerlux products are very elegant and they have embraced the notion of a trim-less fixture, which makes for a very clean fixture.”

— **Quentin Thomas**, president of Quentin Thomas Associates.

For example, in a beautiful ceiling, you don’t want someone having to pry the fixture. Amerlux works out those details and uses magnets so everything aligns well.”

“We work in Class A buildings and the lobby and all the office spaces have to emulate the amount of money spent on the architecture,” Thomas continued. “That includes the lights, which need to look great when they are on and when they are turned off. Amerlux products are very elegant. They have embraced the notion of a trim-less fixture, which makes for a very clean fixture. The lighting has to match the other elements of the room, so when you have a board room with a high-end wood table and wood paneled walls, the light fixtures correspond to that level of quality and detail.”

Aside from the quality engineering and clean aesthetics built

into Amerlux products, Thomas notes that their environmental friendliness was another major selling point for this project.

“Obviously, conserving energy is on everyone’s mind and it’s a tremendous marketing tool for developers and employers to be able to say, ‘This is a state of the art, green-certified space and a healthy environment’.”

For this financial company, located in the heart of Manhattan with sweeping views of some of the most iconic architecture in the world, it was important that all the office ingredients, from the wall paneling to the lighting, showcase an excellent quality. The high-caliber design and manufacture of Amerlux’s Grūv and Hornet fixtures imbued the space with grace and sophistication, making it beautiful.



Photos by Magda Biernat

PROJECT SUMMARY

Project Scope

Complete renovation of an entire floor of office space in the General Motors Building, including 39,000 square feet, for the Manhattan offices of a private financial firm. The new design changed the spatial organization of the space from traditional private offices to a unified, modern, open-office concept.

To achieve this, the overhaul included installation of more than 200 four-foot Gräv 1.5" Recessed Linear LED light fixtures and more than 160 Hornet HP 3.5" square lensed downlight fixtures. Both the Gräv and Hornet LED lights were 3500K, 16W LEDs.

Architect

Valero Dewalt Train Associates (Chicago)

Lighting Designer

Quentin Thomas Associates (Douglaston, N.Y.)

Upgrade Benefits

- The customer received a vibrantly lit office space to conduct business and attract top talent.
- The stylish Amerlux LED fixtures lent a clean and modern aesthetic to the offices and helped unify the different areas in the open space concept.
- The LED lamps' 50,000-hour rated life will deliver years of maintenance-free operation and extraordinary energy savings.



Headquarters

178 Bauer Drive
Oakland, New Jersey 07436 USA
973.882.5010 | Fax 973.882.2605

Houston Office

3450 South Sam Houston Pkwy. E., Suite 400
Houston, Texas 77047 USA
281.997.5400 | Fax 281.997.5441

China Office

Oxidated Carpark 2nd Floor
No. 124 Donghuan Road, Donghuan Jie
Panyu, Guangzhou PRC 511400